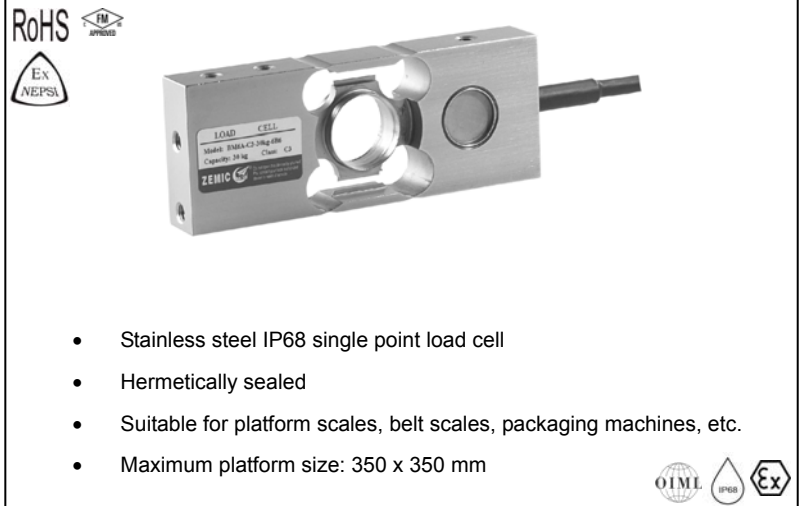


OIML Test certificate no. TC7834 revision 1

OIML C of C no.R60/2000-NL1-10.32



Capacity	Accuracy	Part-Number
6 kg	C3	BM6A-C3-6kg-6B6
12 kg	C3	BM6A-C3-12kg-6B6
30 kg	C3	BM6A-C3-30kg-6B6
60 kg	C3	BM6A-C3-60kg-6B6

- Stainless steel IP68 single point load cell
- Hermetically sealed
- Suitable for platform scales, belt scales, packaging machines, etc.
- Maximum platform size: 350 x 350 mm

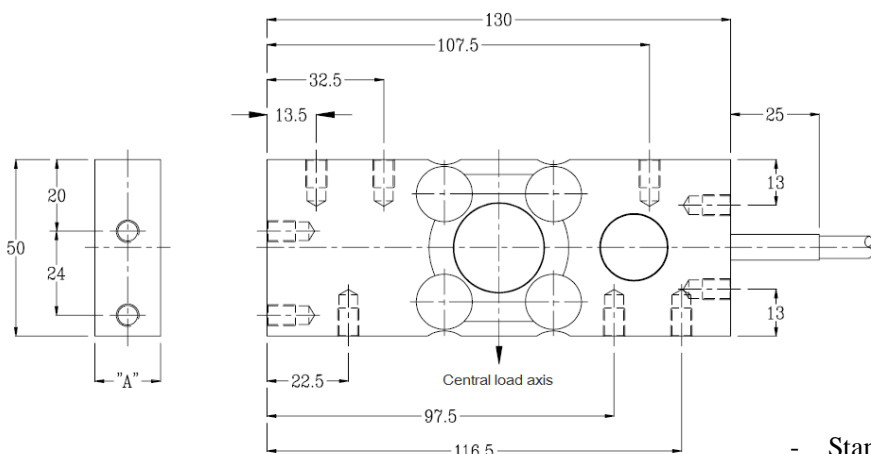


Specification:

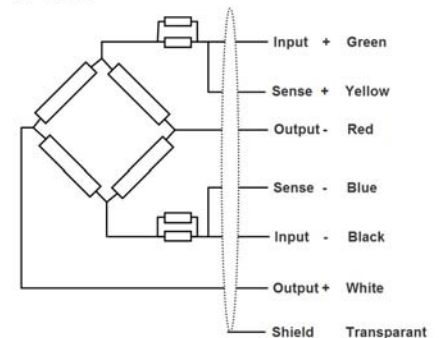
Accuracy class		OIML R60 C3		
Output sensitivity (= FS)	mV/V	2.0 ± 0.2 ¹		
Maximum capacity (E _{max})	kg	6, 12		30, 60
Maximum number of load cell intervals (n _{LC})	n _{LC}	3000		
Ratio of minimum LC verification interval Y = E _{max} / V _{min}	Y	15000		
Minimum Dead Load Output Return (Z = ½ * E _{max} / DR)	Z	3000		6000
Combined Error	%FS	≤ ± 0.020		
Safe overload	of E _{max}	150 %		
Ultimate overload	of E _{max}	300 %		
Zero balance	of FS	≤ ± 1.5 %		
Excitation, recommended voltage	V	5 ~ 12		
Excitation maximum	V	18		
Terminal resistance, input	Ω	400 ± 20		
Terminal resistance, output	Ω	350 ± 3.5		
Insulation impedance	MΩ	≥ 5000 (at 50VDC)		
Temperature range, compensated	°C	-10 ~ +40		
Temperature range, operating	°C	-35 ~ +65		
Element material		Stainless steel 1.4542		
Ingress Protection (according to EN 60529)		IP68		
Recommended torque on fixation bolts	Nm	10		
ATEX classification (optional)		II1G Ex ia II1C T4	II1D Ex iaD 20 T73°C	II3G nL IIC T4

Note 1: Output sensitivity option "S1" is 2.0 ± 0.002 mV/V.

Outline Dimensions in mm



6 - Wire



Capacity	6 kg	12 kg	30 kg	60 kg
A in mm	18.5	18.5	18.5	23.5

All threads are M6x1, 8mm deep

- Standard with 6 conductor shielded cable.
- Standard cable length is 6 meter.
- Shield is not connected to load cell element.
- Different cable type or length are available on customers request.

Please visit our website WWW.ZEMIC.NL for the most actual information

Nr. 2011.12 BM6A Rev5